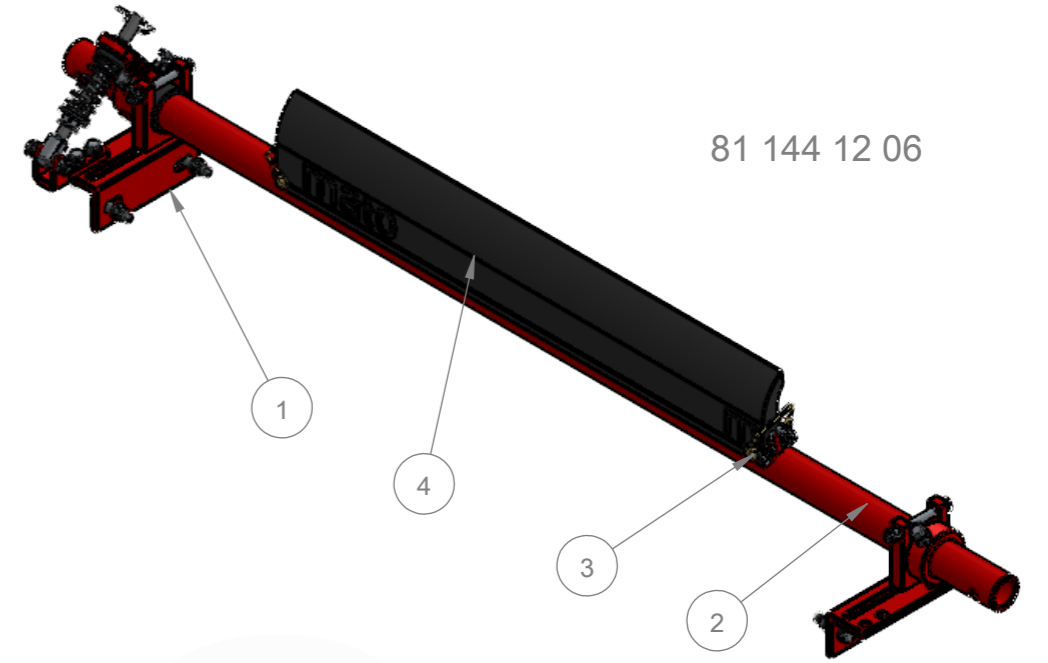
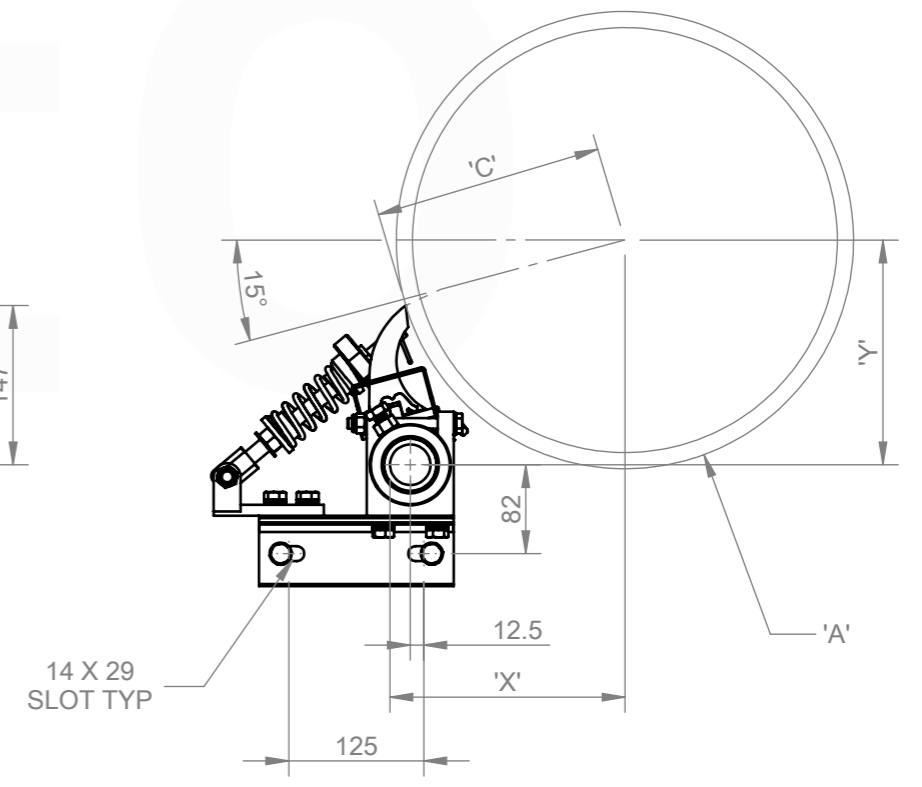
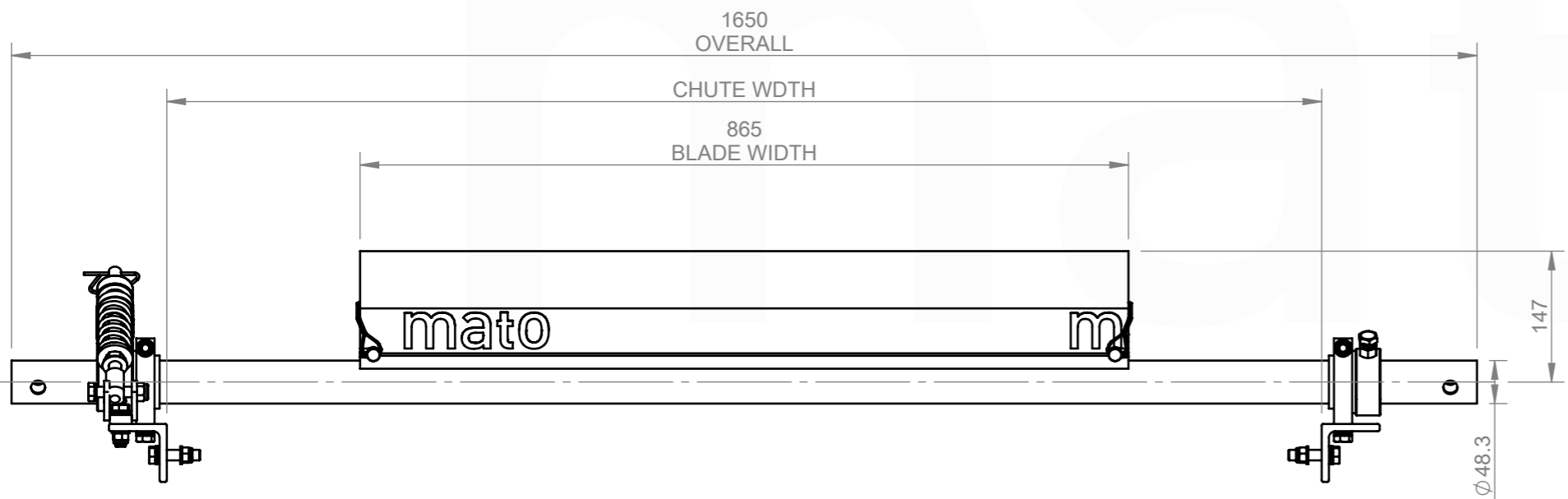


ASSEMBLY NOTES:

- UNLESS DRAWINGS ARE MARKED "FOR CONSTRUCTION", THEY SHALL NOT BE USED FOR CONSTRUCTION PURPOSES
- DO NOT OBTAIN DIMENSIONS BY SCALING FROM DRAWING
- REMOVE ALL BURRS AND SHARP EDGES
- ALL CUTS TO BE A MINIMUM OF CLASS 2  $\sqrt{3.2}$  FINISH UNO



81 144 12 06



14 X 29  
SLOT TYP

CHUTE CUT OUT DETAIL:  
REFER TO CUT OUT TEMPLATE  
MDP120 CS1 INSTALLATION TEMPLATE

ITEM NO.	DESCRIPTION	QTY.	PART No.	MASS k/g
1	MDP 48.3 LD CS1 BLACK SPRING END ASSEMBLY	1	81 144 00 48	6.82
2	MDP120-48-900 SHAFT	1	81 011 06	11.46
3	MDP120/185 BLADE RETAINING PIN	2	81 312 15	0.04
4	MDP120-P2-850	1	81 140 12 17	4.87

<p>REVISIONS</p> <table border="1"> <thead> <tr> <th>REV.</th> <th>DESCRIPTION</th> <th>BY</th> <th>APRVD</th> <th>DATE</th> </tr> </thead> <tbody> <tr> <td>A</td> <td>ISSUED FOR CONSTRUCTION</td> <td>JS</td> <td>DG</td> <td>17/04/25</td> </tr> </tbody> </table>					REV.	DESCRIPTION	BY	APRVD	DATE	A	ISSUED FOR CONSTRUCTION	JS	DG	17/04/25	<p>MACHINING AND FABRICATION TOLERANCES UNO: (ALL DIMENSIONS IN mm)</p> <p>DIMENSIONAL TOLERANCE: PIPE STRAIGHTNESS                  XX ±1.0 &lt;1000 ±3.0                  X.XX ±0.5 &lt;2000 ±6.0                  X.XXX ±0.1 &lt;3000 ±9.0                  X.XXXX ±0.01                  ANGLE: X.X ±1.0°                  X.XX ±0.5°</p> <p>THERMAL CUTTING: ±1.0                  WELDMENTS: ±2.0                  CASTINGS: REFER TO CASTING NOTES                  MACHINING "ROUGH" TO ISO 2768-vL                  MACHINING STD: TO ISO 2768-mK                  POLYURETHANE: ±2.0                  WELD SYMBOLS: IN ACCORDANCE TO ISO 2553</p> <p>MACHINED SURFACES UNO:                  TO BE <math>\sqrt{3.2}</math> WHERE INDICATED "ROUGH"                  TO BE <math>\sqrt{3.2}</math> WHERE NOT INDICATED</p>		<p>MATERIAL: N/A</p> <p>FINISH: N/A</p> <p>COLOUR: N/A</p> <p>MFG'D: INTERNAL</p> <p>SCALE: DO NOT SCALE</p>		<p>DRAWN BY: JS</p> <p>CHECKED: DG 16/04/25</p> <p>APPROVED: DG 16/04/25</p> <p>CREATED: 6/02/2025</p>		<p>DESCRIPTION: MDP120-P2-CS1-900/50</p> <p>PART NO.: 81 144 12 06</p> <p>MASS: 23.24 KG</p>		<p>PROFILE CUT ITEMS:                  TO BE CUT FROM SUPPLIED DXF CAD FILE WHERE APPLICABLE                  ADDITIONAL DIMENSIONS CAN BE PROVIDED ON REQUEST.                  DO NOT SCALE IF IN DOUBT</p> <p>© COPYRIGHT, ALL RIGHTS RESERVED</p> <p>THIS DRAWING IS STRICTLY CONFIDENTIAL AND MUST NOT BE COPIED, REPRODUCED OR ADAPTED, NOR MAY ARTICLES BE MANUFACTURED IN ACCORDANCE WITH THE DRAWING WITHOUT PRIOR WRITTEN PERMISSION OF MATO AUSTRALIA PTY LTD.</p>		<p><b>mato</b></p> <p>MATO AUSTRALIA PTY LTD                  (INCORPORATED IN NSW) ABN 82 050 057 726</p> <p>38 BONVILLE AVE                  THORNTON NSW 2322                  PH: 1300 850 795 FAX: (02)4936 1388</p>		<p>DRAWING NO.: 7722</p> <p>PG. SIZE: A3</p> <p>SHEET: 1 / 1</p> <p>REV: A</p>	
REV.	DESCRIPTION	BY	APRVD	DATE																								
A	ISSUED FOR CONSTRUCTION	JS	DG	17/04/25																								

C:\Mato\Auto\Auto\Production\NEW FOLDER STRUCTURE\PRIMARY CLEANERS\MDP - PRIMARY CLEANERS\MDP120\144 12 06\CAD FILES\81 144 12 06